

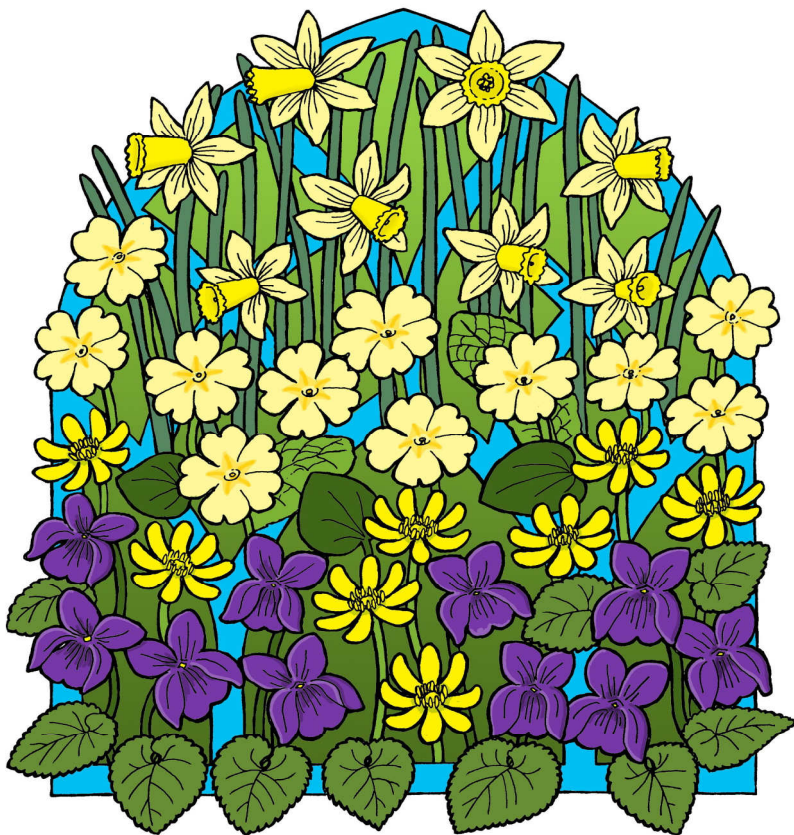
# St George's Parish Church Stalybridge



 THE CHURCH  
OF ENGLAND  
Diocese of Manchester

CHURCH  
FOR A  
DIFFERENT  
WORLD

50p



The flowers are blooming, the time of birdsong has come! Song of  
Songs 2:12

March 2022

# St George's Church Stalybridge

Vicar

Wardens	Mrs Gillian Cotton	0781 624 4909
	Mrs Valerie Fallows	0161 304 9522
Deputy Wardens	Mrs Christine Crabtree	0161 2851775
	Mrs Janet Vidler	0161 303 7689
Safeguarding Co-ordinator	Mrs Rose Hayward	0161 303 1731
P.C.C. Secretary	Mrs Lynn Moon	0161 338 5773
Treasurer	Mr Michael Davies	0161 338 5112
Magazine Editor	Mrs Linda Hurst	0161 330 0518
Room Hire	Mrs Janet Vidler stgwarden@hotmail.co.uk	0161 303 7689

FACEBOOK  
@stgeorgestalybridge

[www.stg.org.uk](http://www.stg.org.uk)  
TWITTER  
@StGStalybridge

*For baptisms, marriages or funerals or to have the name of a departed friend or relation entered in the Book of Remembrance, please contact the Wardens on 07553 258674 or [stgeorge.wardens@yahoo.com](mailto:stgeorge.wardens@yahoo.com).*

*Baptisms are usually conducted at 12.30 pm  
on the 1st & 3rd Sundays of the month.*

*To receive Communion at home when you are sick or housebound, please contact Chris Crabtree on 07714235736 or*



*The Ven John Barton considers how to make the most of Lent.*

## **Look at you**

Lent encourages us to examine how we're getting on. It's especially useful for people who have been practising Christians for some time. We're used to saying prayers, going to church and trying to express our faith in action, but the routine may have become a bit jaded. We would like to beef it up, but the very busyness of living gets in the way.

Self-examination doesn't demand grovelling or self-abasement or flagellation. It means going into the open space of the wilderness with Jesus and trying to imagine what He was facing, as He prepared Himself "in the power of the Spirit" to embark on His life's work.

What might His temptations mean for us here and now? They offered Him short cuts. Turning stones into bread could solve the world's poverty gap in a stroke. It would relieve us of our responsibility to combine generosity with ingenuity and put right the world's grotesque inequalities. Jesus responded to that temptation by quoting scripture, "Human beings cannot live on bread alone". It speaks volumes for the 21st Century.

Then Jesus was tempted to do a deal with the devil, on the pretext that collaboration would deliver results. "God alone is due our homage", was His rebuff, quoting scripture again. Since everyone worships something or someone, it would be a valuable exercise to consider carefully what or who takes pride of place in our schedule. It's a tough one. What do we love most, and do we need to adjust our priorities?

Magic was the next option. Jump off the temple roof and you'll be OK. Jesus dismissed this offer with the words, "Don't put God to the test". While that stunt wouldn't appeal to many Christians, there's a breed of phoney preachers today who promise financial success and perfect health to their followers.

Others reduce the Gospel to the single word, 'love', as though acquiring a sunny disposition could solve humanity's problems. The definition of love in 1 Corinthians, Chapter 13, suggests something quite different. That

## Service Details

### Sundays

**10.30am Parish Eucharist with hymns**

**Baptisms, weddings and funerals continue  
with no numerical restrictions**

*A full risk assessment is in place and regularly revised.  
We continue stringent hygiene and social distancing procedures.*

**YOU MUST NOT ATTEND if you are unwell, self isolating  
or showing any symptoms.**

+++++

#### **COVID 19 UPDATE**

***If you have any questions, queries or concerns,  
please contact the Churchwardens on 07553 258674 or  
stgeorge.wardens@yahoo.com***

#### **Covid 19 Measures**

Please continue to sanitise your hands on your way into the building. You are encouraged to keep wearing a face covering in church to help protect one another – this is now your choice. You are encouraged to ensure that you are well spaced around the church and not singing directly behind someone else. Please continue to leave your collection on the plate at the back of church. The peace may be shared physically but please share only with those in your pew. If you do not wish to share the peace physically, please wave the peace instead to indicate this! Holy Communion continues to be received standing and using the one-way system still in place in church. You are encouraged to sanitise your hands before receiving. The chalice will be available for those who wish to receive it. **No intinction (dipping wafers)**

+++++

# CHURCH NEWS

## LENT COURSE



This year's Lent Course will start on Monday 7th March at 7p.m. in the Church Lounge and continue throughout Lent concluding on Monday 11th April.

Please speak to  
further details.

+++++

Joyce Hansell for

## Cleaning Team



We desperately need more volunteers for the cleaning team - you don't have to commit to every week, every bit of help will be welcomed. Please speak to Rose for details.



If your group or organisation needs storage space,  
please have a chat with Rose.



## Maintenance

+++++

## Team

If you would like to be a part of the maintenance team please have a chat with either Ted or Ian, or simply call into Church on a Tuesday morning. It doesn't matter if you are a long-standing member, or a newbie, your help is valued. Likewise if you are not able to help on a regular basis, any time you can give will be appreciated

## **YOU COULD WIN £100!**

Just pick your Birthday date or Anniversary date or a date that's



## PARISH EMAIL NEWSLETTER

To help us keep in touch we have a weekly email parish newsletter with bible readings and prayers for Sundays, information, updates, activities for Junior Church and announcements

If you don't already receive the e-newsletter and would like to, please email the wardens on [stgeorge.wardens@yahoo.com](mailto:stgeorge.wardens@yahoo.com) send your email address by text or WhatsApp to the wardens or sign up via our church Facebook page or website.



### My Feet

MOBILE Chiropody & Podiatry  
Foot care at home

Nail care,  
Corns,  
Callus,  
Fungal infections,  
**Ingrowing** toe nails.  
Footwear advice  
Insoles, and other  
foot related problems.

**Janette McLean**  
BSc (Hons) Podiatry

Tel: 0161 338 8950  
Mobile: 07961 583 668



HPC registered Podiatrist

## *Carr's*

THE BAKERS  
*of Stalybridge*  
*Wholesale and Retail*



Est.1922  
44-46 RIDGEHILL LANE  
STALYBRIDGE  
0161 338 2177  
164 MOSSLEY ROAD  
ASHTON-UNDER-LYNE  
0161 330 1341

## Readings and Psalms for March 2022

Tues 1<sup>st</sup> 10.30 No service

**Wed 2<sup>nd</sup> Ash Wednesday**  
**20.00** Joel 2.1-2,12-17; Psalm 51.1-18; 2 Corinthians 5.20b-6.10; Matthew 6.1-6,16-21

**Sun 6<sup>th</sup> 1st Sunday of Lent**  
**10.30 Deuteronomy 26.1-11; Psalm 91.1-11; Romans 10.8b-13; Luke 4.1-13**

Tues 8<sup>th</sup> 10.30 No service

**Sun 13<sup>th</sup> 2nd Sunday of Lent**  
**10.30 Genesis 15.1-12,17-18; Psalm 27; Philippians 3.17-4.1; Luke 13.31-end**

Tues 15<sup>th</sup> 10.30 No service

**Sun 20<sup>th</sup> 3rd Sunday of Lent**  
**10.30 Isaiah 55.1-9; Psalm 63.1-9; 1 Corinthians 10.1-13; Luke 13.1-9**

Tues 22<sup>nd</sup> 10.30 No service

**Sun 27<sup>th</sup> 4th Sunday of Lent - Mothering Sunday**  
**10.30 Exodus 2.1-10; Luke 2.33-35**  
***Worship for All***

Tues 30<sup>th</sup> 10.30 No service

+++++

**Come Together at  
St George's Church  
for tea, chat, and activities  
every Thursday 1pm-3pm**  
*Refreshments, conversation, activities,  
and a place to simply be with others.*  
*No charge.*



# Slimming World taste the freedom



Zoe lost 4st in 2 years 1 month

new for 2022  
super-charged  
member  
pack!

**FREE**  
membership\*  
when you buy a 12-week  
Countdown course  
26th Dec 2021 to 15th Jan 2022

## Meet Your Local Consultants

**Cassandra**  
07738904029

Stalybridge  
Labour club  
Tuesday  
6pm



Stalybridge  
Labour club  
Wednesday  
9.30am

**Marie**  
07585963169






Stalybridge  
Reach Church  
Wednesday  
4.15pm 5.45pm  
7.15pm

**Jane**  
07742046993



Stalybridge  
Silver Springs  
Academy  
Thursday  
6pm

#SWtastethefreedom

   [slimmingworld.co.uk](https://www.slimmingworld.co.uk)

\*At participating groups only. See our website for more information.

**Slimming**<sup>®</sup>  
WORLD

touching hearts, changing lives



## Some dates for your diary - March 2022

Wed	2nd	8.00 p.m.	Ash Wednesday Eucharist
Thurs	3rd	9 a.m. - 11 a.m.	Tiny Tots
		1.00 p.m. - 3.00 p.m.	Come Together Café for coffee, chat & activities
		7.30 p.m.	Tameside Community Voices Practice
Fri	4th	1.30 pm. - 3.30 p.m.	Dementia Café - please book places on 07714235736
		2.00 p.m.	World Day of Prayer at Stalybridge Congregational Church
<b>Sun</b>	<b>6th</b>	<b>10.30 a.m.</b>	<b>Parish Eucharist with hymns</b>
Mon	7th	7.00 p.m.	Lent Course
Thurs	10th	9 a.m. - 11 a.m.	Tiny Tots
		1.00 p.m. - 3.00 p.m.	Come Together Café for coffee, chat & activities
		7.30 p.m.	Tameside Community Voices Practice
<b>Sun</b>	<b>13th</b>	<b>10.30 a.m.</b>	<b>Parish Eucharist with hymns</b>
Mon	14th	7.00 p.m.	Lent Course
Thurs	17th	9 a.m. - 11 a.m.	Tiny Tots
		1.00 p.m. - 3.00 p.m.	Come Together Café for coffee, chat & activities
		7.30 p.m.	Tameside Community Voices Practice
Fri	18th	1.30 pm. - 3.30 p.m.	Dementia Café - please book places on 07714235736
<b>Sun</b>	<b>20th</b>	<b>10.30 a.m.</b>	<b>Parish Eucharist with hymns</b>
Mon	21st	7.00 p.m.	Lent Course
Thurs	24th	9 a.m. - 11 a.m.	Tiny Tots
		1.00 p.m. - 3.00 p.m.	Come Together Café for coffee, chat & activities
		7.30 p.m.	Tameside Community Voices Practice
<b>Sun</b>	<b>27th</b>	<b>10.30 a.m.</b>	<b>Parish Eucharist with hymns</b>
Mon	28th	7.00 p.m.	Lent Course

For more information please go to our website [www.stg.org.uk](http://www.stg.org.uk)

+++++

### **200 Club**

#### **February Winners**

1st prize £25 no 41 John Shepherd; 2nd prize £15 no11 Gillian Brayshaw;  
3rd prize £10 no55 Jack Roberts



## ST GEORGE'S CHURCH DEMENTIA CAFÉ

You may remember that as a result of Covid we were forced to close our newly formed initiative of a Dementia Café here at St George's. We were able to reopen in September and I am thrilled to say that it is proving a resounding success! After a slow start (mainly due to the uncertainty of venturing out post Covid) we now have regular attendees of between 12-20. We also have over eight devoted volunteers who work tirelessly to make sure that everyone has everything they need. We have had a concert by Tameside Community Voices, made Christmas and Valentine crafts and cards, had a Christmas party with a singer, themed quizzes and lots more. We are also able on occasion to provide some gentle hand massage and relaxation treatment. I have purchased a set of carpet bowls, quoits and skittles to play which have gone down a treat! (They are a very competitive bunch!)

All we ask for is £1 donation towards the tea and coffee although through the generosity of many visitors we have also started to provide a light lunch once a month which is also very well received.

I have managed to secure additional funds via trust applications to fund the rest of the costs and hopefully this will also enable us to "buy in" more entertainment.

Our guests are so appreciative of all that we do for them. It is very humbling to be able to offer help, support and a friendly ear to those suffering from this cruel and debilitating disease together with their carers.

If you know someone who could benefit from our help, please contact me on 07714235736.

Chris Crabtree

### MEETING DATES

- |                        |        |  |
|------------------------|--------|--|
| 4 <sup>TH</sup> MARCH  | 1.30pm | It's Playtime! Let's get the games out! Plus a bit of pampering for those who want to chill out!                         |
| 18 <sup>th</sup> MARCH | 1.00pm | (Light Lunch) Wear Green for St Patrick's Day!<br>An Irish themed quiz!  |
| 1 <sup>st</sup> APRIL  | 1.30pm | Beetle Drive!  |
| 22 <sup>nd</sup> APRIL | 1.00pm | (Light lunch) A fabulous concert by two Vocalists.<br>Plus the all important Singalong (NOTE DATE CHANGE DUE TO EASTER!) |

## What did your church learn during lockdown?

*The Revd Peter Crumpler wonders how churches have adjusted to the new-normal.*



This month marks two years since the UK's first Covid lockdown. Churches closed their doors for worship as infection levels, hospital admissions and, tragically, deaths rose. Even today, some worshippers are reluctant to return to 'in person' worship, and churches are still taking care to limit Covid risks.

What did we learn in the 24 months since the pandemic became part of our everyday lives? I have picked out four learning points:

Churches built stronger links with their local communities. Church services may have been suspended, or moved online, but many churches set up networks of support for people within their congregations and across their areas. Churches supported or set up ways of helping the most vulnerable in their communities, and many churchgoers volunteered to help local caring charities and, later, at vaccination centres.

Churches reached new people by going online. Overnight, many churches threw open their doors to people on their doorstep, and further afield. Suddenly, distance did not matter – and people were 'attending' online services at churches around the world. Worshippers with disabilities welcomed the online services – and gently asked why it had taken the wider Church so long to acknowledge their needs.

Churchgoers learnt to be grateful for all the things they had taken for granted. Suddenly, singing hymns or worship songs together, receiving communion with bread and wine, and responding to a sermon together, all became a memory from an earlier time. We realised how much we needed each other and appreciated each other's fellowship and presence. Home-based fellowship groups, now online, thrived at many churches.

Churches chose their priorities. During lockdown, many churches asked themselves, what really matters? What are our priorities now? Disputes around issues of church governance or practices were put on the back-burner and congregations focussed on providing services of worship and supporting those in

These are just my 'top four' suggestions – and of course they will not apply to all churches. Perhaps I have painted too rosy a picture?

Why not ask yourself, what your church learnt during lockdown – and how far those lessons could help you plan for the future?

## Georges Kitchen

Our community kitchen is now up and running and reaching many people within our community. We have had some good feedback from our customers and look forward to increasing our customer numbers in the new year.

However, as with all these things, we need volunteers, particularly cooks. If you are able to help in any way, either helping to prepare, cook or deliver the meals, or are able to help with the admin side of things, we would be incredibly grateful.

If you would like any more information, please contact [georgeskitchen2021@gmail.com](mailto:georgeskitchen2021@gmail.com)

You can also telephone or text: 07783 009157

## Magazine Subscriptions

***We are delighted that the magazine is now back up and running!***

We have not asked for subscriptions this year as the publication and distribution of the Parish Magazine in 2020 and 2021 has been so sporadic due to the pandemic and restrictions face.

Thank you to those who have continued to make donations.

***We are now going to begin afresh!***

There will now be 10 editions produced each year – these will include a December/January edition and a July/August edition.

The cost will be 50p per magazine and therefore, a subscription of £5 per year. Subscriptions will be collected in November/December with the following year's subscription, beginning with the December/January edition.

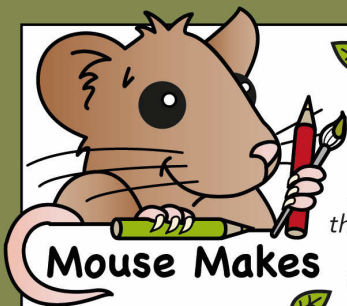
Please be in touch with Julia Davies on 0161 338 5998 if you have any questions or need any further information.

+++++

### February Crossword Solution

**ACROSS:** 1, Credit. 4, Tackle. 7, Cain. 8, Kenaniah. 9, Strength. 13, Beg. 16, Salvation Army. 17, ARC. 19, Every day. 24, Admonish. 25, Dire. 26, Sneeze. 27, Bronze.

**DOWN:** 1, Cock. 2, Epistolic. 3, Taken. 4, Tenet. 5, Cane. 6, Leave. 10, Erase. 11, Guide. 12, Honey. 13, Barbarian. 14, Guys. 15, Asia. 18, Rod in. 20, Voice. 21, Rahab. 22, Hope. 23,



## Mouse Makes

### GOOD FRUIT OR BAD FRUIT?

Jesus said:

*"No good tree does not produce bad fruit, nor does a bad tree produce good fruit. Each tree is known by its own fruit..."*

*...Good people bring good things out of the good things stored in their hearts. But evil people bring evil things out of the evil they stored in their hearts. People speak the things that are in their hearts."*

- Luke 6: 43-45

During LENT ask God to help you through His Holy Spirit to turn your hate to **love**, your impatience to **patience** and your unkindness to **kindness**, so we can be like a good tree that grows good fruit.



READ  
Luke  
6: 27-45

How did Jesus  
say we should  
treat others?

Look up  
Luke 6:31



S P E A K A E S D  
B R O F R U I T E  
L A F G I V E O H  
E Y O O H E A R T  
S P R O D U C E R  
S A G D A B H D E  
B R I N G O W N E  
A E V I L O V E V  
D R E P E N T E K

to everyone  
who asks you  
Luke 6:30

for those who  
are cruel to you  
Luke 6:28

those who  
curse you  
Luke 6:28

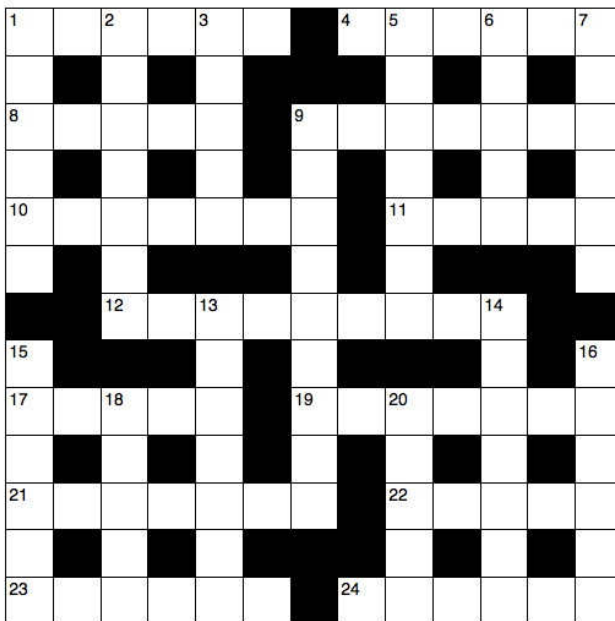
to those that  
hate you  
Luke 6:27

and you will be  
forgiven  
Luke 6:37

Find these words from **Luke 6** in the word search above.

GOOD • BAD • FRUIT • TREE • HEART • EVIL • EACH • OWN • STORED  
PRODUCE • BRING • SPEAK • REPENT • FORGIVE • LOVE • BLESS • PRAY • GIVE

## March Crossword



### Across

1 Arouse (Song of Songs 2:7) (6), 4 Extinguish (Isaiah 1:31) (6), 8 ““They — — ,” you will say, “but I’m not hurt!”” (Proverbs 23:35) (3,2), 9 Unhappiness (Nehemiah 2:2) (7), 10 Jewish (7), 11 Dirge (anag.) (5), 12 ‘A truthful witness gives honest — , but a false witness tells lies’ (Proverbs 12:17) (9), 17 Paul quoted from the second one in his address in the synagogue at Pisidian Antioch (Acts 13:33) (5), 19 ‘Do not use your freedom to — the sinful nature’ (Galatians 5:13) (7), 21 ‘As you can see, he has done nothing to — death’ (Luke 23:15) (7), 22 Name applied by Isaiah to Jerusalem (Isaiah 29:1) (5), 23 ‘All the people — — one man, saying, “None of us will go home”’ (Judges 20:8) (4,2), 24 Lazarus, who was carried by angels to Abraham’s side when he died, was one (Luke 16:20) (6)

### Down

1 Appalled (Job 26:11) (6), 2 ‘In an — to escape from the ship, the sailors let the lifeboat down into the sea’ (Acts 27:30) (7), 3 Expel (Acts 18:16) (5), 5 ‘But I have a baptism to — , and how distressed I am until it is completed!’ (Luke 12:50) (7), 6 ‘Of the increase of his government and peace there will be — — ’ (Isaiah 9:7) (2,3), 7 Hurry (Psalm 119:60) (6), 9 ‘For I desire mercy, not — , and acknowledgement of God rather than burnt offerings’ (Hosea 6:6) (9), 13 One of its towns was Sychar, where Jesus met a woman at Jacob’s well (John 4:5) (7), 14 Shouting (Acts 7:57) (7), 15 Arachnid (Isaiah 59:5) (6), 16 One of Paul’s first converts in Philippi was Lydia, a — in purple cloth (Acts 16:14) (6), 18 Donkeys (5), 20 Raked (anag.) (5)



+++++



Do you shop online?  
If you do remember to use easyfundraising.

It's easy and completely FREE! Over 4,000 shops and sites will donate to us when you use easyfundraising to shop with them – at no extra cost to yourself!

***These donations really mount up – since joining last year over £278.05 has been raised JUST by people using easyfundraising when they shop online!!***

Please sign up to support us at  
[www.easyfundraising.org.uk/causes/stgeorgeschurchstalybridge](http://www.easyfundraising.org.uk/causes/stgeorgeschurchstalybridge)

+++++

## Ridge Hill Lane WMC

Main room can be booked free of charge for various functions, subject to availability

Artistes regularly



All live sport shown on large screens



Pool tables

Children allowed under supervision

New members always welcome

Contact manager for further info on

### Smile Lines for Mother's Day - Why God made mums

*These were the answers given by some seven- year-olds...*

#### **Why did God make mothers?**

- \*She's the only one who knows all the passwords we use online.
- \*Mostly to clean the house, I think.

#### **How did God make mothers?**

- \*He used dirt, just like for the rest of us.
- \*God made my mum just the same like He made me. He just used bigger parts.

#### **What ingredients are mothers made of?**

- \*God makes mothers out of clouds and angel hair and one part of mean.
- \*They had to get their start from men's bones. Then they mostly use string, I think.

#### **Why did God give you to your mother, and not to some other mum?**

- \*We're related.
- \*God knew she likes me a lot more than other kids' mums like me.
- \*Other mums wouldn't understand about me being afraid in the dark.

#### **What kind of little girl was your mum?**

- \*I don't know because I wasn't there, but my guess would be pretty bossy.
- \*They say she used to be nice.

#### **Who's the boss at your house?**

- \*Dad is, because mum says so.
- \*Mum. You can tell by room inspection. She sees the stuff under the bed.

#### **What's the difference between mums & dads?**

- \*Mums know how to talk to teachers without scaring them.
- \*Dads are taller and stronger, but they panic when the dishwasher overflows.





*H. REVELL & SONS  
LTD.*

**A Family of Funeral Directors since  
1888**

*Pre-payment Plans arranged*

**96 Stamford Street  
Stalybridge**

**0161 338 2520**

*Proprietors: N.T. Revell  
K. Revell BA (Hons)*

# BAPTISMS, WEDDINGS & FUNERALS

## Funerals

31 January

Madge Aves



+++++



## CHURCH MICE



We're ecclesiastical mice, wearing  
small grey cassocks.

We conceal ourselves underneath the pews and  
chew through all the hassocks.

Our congregation's growing fast, unlike the humans who venture  
here.

They turn up only once a week, sing, pray—then disappear.

We scamper in the bell tower and join in merrily with the choir.

We cannot sing any low bass notes but join in with the sopranos  
(only higher).

We nibble chocolate eggs at Easter, at Christmas there's rich iced  
cake.

But Harvest Festival is the best, when there's fruit and veg to take.

We have very special Bible skills, (though we couldn't take a test).

Today we're chewing through Deuteronomy to make soft beds for  
our nests,

We feel welcome in this lovely church, for carved on one wooden  
pew,

Is a very tiny mouse God with a long tail and whiskers too.

So it's here that we like to worship without a Bible or kneeling mat.

We ask only one single prayer .... That our church never gets a cat!



## From Our Book of Remembrance

1 Mar	Thomas Cowman	1984	13 Mar	William Bateman	1978
	George Harry Hobson	1984		Donald Feetham	1997
	Mary Bailey	1969		Beatrice Kelsall	1981
	Tom Bowden	1972		Christine Higgins	2010
	Joan Wheatley	1972	14 Mar	Frank Stones	1990
	Allen Marsden	1995	16 Mar	Daniel James Greenhalgh	2020
	Betty Curtis	2014	18 Mar	Thomas Williamson Thomson	1983
	Kenneth John Dodd	2017		Alma Nuttall	1991
2 Mar	George Jubb	1978		Roberto Luigi Pravisani	2005
	Gerard Postings	1996		David Rawsterne	2009
3 Mar	Tom Broadbent	1989	19 Mar	Thomas Green	1966
4 Mar	Jean Boyle (nee Smith)	2011	20 Mar	Ernest Sidebottom	1988
5 Mar	Dennis Harrison	1985	21 Mar	James Shenton	1964
	Rose Ann Quest	1991		John Duxbury	1985
6 Mar	James Wilkinson	1985		Regan Joseph Michael Tetlow	1988
	Albert Barber	1987		Frank Cooke Jackson	1993
	James Eric Hinchliffe	1999		Emmeline Elizabeth Heap	1997
	Barry Mutch	2008	23 Mar	Harold Moore	1996
	Ellen Johnson	2018		George James Crossland	2002
7 Mar	Henry Saxon	1977		James Wright	2001
	Sadie Shaw	1984		James Johnson	1984
	Jessie Mary Daly	1986		Ian Stuart Wharton	2014
8 Mar	Jane Norris	1969	24 Mar	Alice Hardon	1989
	Margaret Cawley	1985	26 Mar	Denis Patrick Daly	1984
9 Mar	Gordon Wheatley	1998		Samantha Jane Dunlop	1984
	Joseph Sharpe	2000		Edward Noah Clayton	1989
	Norman Nield	2005		Hilda Graham	2009
10 Mar	Lewis Dain Gudger	2014	27 Mar	Herbert Battersby	1965
	Rosemary Andrew	2017		Theresa Aldred	1999
11 Mar	Sarah Ann Allsop	1986		Mary Bardsley	1994
	Enid Longden	2014	28 Mar	Patricia Carter	2014
	Brian Jones	2008	29 Mar	William Spencer	2000
12 Mar	Herbert Bardsley	1981		Olive Stephenson	1985
	James Turner	1987		Bernard Joseph Walsh	2012
	Harold Webster	1987	30 Mar	Norman Stokes	1970
	Mabel Sweeney	1991		William Forde Clarke	2005
	Basil Kirk	1989		John William Arthur Dale	2008
	Mary Bailey	2014		Maureen Bebbington	2016
			31 Mar	Tom Grimes	1980
				Mark Press	1981



## BOOK OF REMEMBRANCE

To have the name of a loved one entered into this special book, and remembered in our intercessions for their anniversary please have a word with one of the wardens.

The cost for the inscription is £10 per entry

+++++

# TAMESIDE (S.A.S) GROUP

## Stroke Awareness Support Group

*Affiliated to the Stroke Association*

We are a social group for all who have survived a stroke, their families, friends and carer.

We meet on:

**Wednesday**

**10.30 am till 12.30 pm**

**at The Pavilion, Dukinfield Park**

Our aim is to enjoy life, no matter what and have fun and socialise.

Our message is:

***DON'T STOP BEHIND CLOSED DOORS, OURS IS OPEN.***

We look forward to new members and volunteers to join us. Come in for a brew and a chat.

**Don't be shy...Give us a try!**

**IF YOU WOULD LIKE MORE INFORMATION**

**Contact:**

**HELPING TO REBUILD CONFIDENCE AND INDEPENDANCE**